

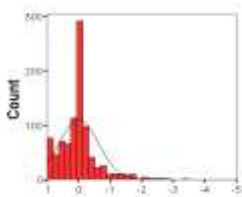
EPiC-Q (Everyday Processing in Children Questionnaire)

What is EPiC-Q?

- EPiC-Q is a questionnaire that is being developed to assess listening skills in children aged between 6-11 years.

Why do we need EPiC-Q?

- There are many children with normal hearing who have some form of difficulty when processing sounds around them; especially speech when they are in a noisy environment. This is usually referred to as an Auditory Processing Disorder (APD).
- Current commonly available questionnaire for listening skills difficulties (CHAPPS) has many design faults and is not sensitive to differences in listening skills in children. Problems with CHAPPS include:
 - Not standardised for different age ranges
 - Scaling system which encourages response bias
 - Requires reflection
 - Requires comparison with other children of a specific age or background



This illustrates severe response bias in CHAPPS resulting in lack of sensitivity to individual differences in listening skills.

(SA ++) Strongly Agree	(A +) Agree	(NAD 0) Neither agree nor disagree	(D -) Disagree	(S.D. --) Disagree Strongly
---------------------------	----------------	---------------------------------------	-------------------	--------------------------------



Item	Statement	SA ++	A +	NAD 0	D -	SD --
1.	Zones out					

EPiC-Q

No comparisons with others.
Simple statements, simple unbiased scaling system with colour coding to help parents remember what scale means

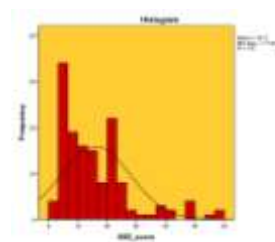
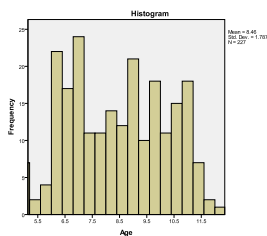
Creating the EPiC questionnaire

- **Four stage process**

- Focus groups: to design questionnaire
 - Piloting: to identify most sensitive questions
 - Standardisation: to determine developmental norms for listening skills
 - Validation: to test sensitivity of questionnaire to differences in listening skills across five developmental disorders (Autism, ADHD, APD, SLI and mild hearing impairment)
- Ultimately this will provide the information for EPiC-Q's use in clinics/ schools – as it will indicate how questions are responded to dependent upon disorder/ typically developing. Profiles of which questions we would expect to be answered positively/ negatively for each disorder/ typically developing child will then be known.

Facts and figures

- 365 people consented to take part in piloting
- Over 200 people completed piloting from start to finish and received £5 boots vouchers.
- Information was gained about children aged between 5;8 and 11;11. Participants came from a large range of economic backgrounds – scores 0-61, 0 = low deprivation, 60 = high deprivation. In the UK it ranges from 0-85.



Who is involved in the project?

Chief investigator: Dr Johanna Barry (Johanna@ihr.mrc.ac.uk; 0115 849 33 51.)

Scientific Advisor: Professor David Moore

Research Assistant: Sophie Richardson (sophie@ihr.mrc.ac.uk; 0115 849 33 51.)